

HYDREL M9000™

(GB) SAFETY NOTICE

READ INSTRUCTIONS CAREFULLY BEFORE INSTALLING THIS LUMINAIRE

The installation instructions supplied with this equipment are specifically designed to prevent equipment damage and the possibility of personal injury. It is an essential requirement that the installation procedures are followed strictly as illustrated, by suitably qualified personnel. Reference must be made to the lamp manufacturers instructions as provided with the lamp, whether the lamp is supplied by Holophane or not. Holophane will not be held liable for any damage or injury whatsoever resulting in faulty installation. This luminaire must be earthed.

(D) ALLGEMEINE SICHERHEITSHINWEISE

DIESE HINWEISE SIND VOR INSTALLATION EINER LEUCHE SORGFÄLTIG DURCHZULESEN

Die mit diesem Produkt gelieferten Installationsanweisungen sind genau zu befolgen, um Schäden an Personen oder Sachen zu vermeiden. Alle Arbeiten müssen von hierfür ausreichend qualifiziertem Personal gemäß der Installationsanweisung durchgeführt werden. Die vom Lampenhersteller mit der Lampe gelieferten Anweisungen sind zu beachten und genau zu befolgen, ungeachtet der Tatsache, ob die Lampe von Holophane geliefert wird oder nicht. Holophane übernimmt keine Haftung für aufgrund unsachgemäßer Installation entstandene Personen- oder Sachschäden. Die Leuchte ist ordnungsgemäßer zu erden.

(NL) VEILIGHEIDSVORSCHRIFTEN

GELIEVE DE INSTRUCTIES AANDACHTIG DOOR TE LEZEN ALVORENS HET ARMATUUR TE INSTALLEREN

De installatie-instructies die bij dit armatuur meegeleverd worden zijn speciaal ontwikkeld om beschadigen en persoonlijke verwondingen te voorkomen. Het is noodzakelijk dat de installatie-instructies opgevolgd worden zoals ze zijn aangegeven op de bijlage. Tevens dienen ze te worden uitgevoerd door gekwalificeerd personeel. Voor de instructies met betrekking tot de lamp verwijzen wij u naar de gegevens van de lampenleveranciers, ongeacht of de lamp wel of niet door Holophane is geleverd. Holophane houdt zich niet verantwoordelijk voor schade of verwondingen ontstaan door onjuiste installatie. Het armatuur moet geaard zijn.

(N) SIKKERHETSINSTRUKS

LES INSTRUKSJONENE NØYE FØR ARMATUREN INSTALLERES

Monteringsanvisningen som følger dette utstyr er spesielt utformet for å hindre skade på personer eller utstyr. Det er nødvendig at installasjonsprosedyren følges nøyaktig som det er beskrevet og av godkjent personell. Det vises til lampefabrikantens instruksjoner som følger lampen, uavhengig av om lampen leveres fra Holophane eller ikke. Holophane påtar seg ikke ansvar for skade som skyldes feil installasjon. Denne armaturen må jordes.

(S) SÄKERHEISFÖRESKRIFTER

LÄS INSTRUKTIONERNA NOGGRANNT FÖRE INSTALLATION AV DENNA ARMATUR

Montageanvisningarna till denna utrustning är speciellt utformade för att förhindra på utrustningen eller möjligheten av personskada. Det är ett oundgängligt krav att installationsföreskrifter noggrant följes som illustrerat, av lämplig kvalificerad personell. Uppmärksamhet måste tas till lampfabrikantens instruktioner som medföljer lampen, vare sig lampen är levererad av Holophane kan inte srällas till ansvar för någon som helst orsakad av felaktig installation. Denna armatur måste jordas.

(PL) UWAGI BEZPIECZEŃSTWA

PRZED PRZYSTAPIeniem DO MONTAZU TEJ OPRAWY PROSIMY UWA NIE PRZECZYTAĆ TE INSTRUKCJE.

Instrukcja montażu dostarczona z tym produktem ma na celu zabezpieczyć przed zniszczeniem produktu oraz przed możliwocią osobistego porażenia prądem. Szczególnie ważne jest aby postępować zgodnie z zamieszczonymi ilustracjami obrazującymi przebieg poprawnego montażu przez odpowiednio wykwalifikowany personel. Jeśli Holophane dostarcza lampy razem z oprawą należy postępować zgodnie z instrukcją producenta lamp. Holophane nie ponosi żadnej odpowiedzialności za uszkodzenie produktów oraz niebezpieczeństwo porażenia prądem w wyniku nieprzestrzegania powyższej instrukcji. Ta oprawa musi być uziemiona.

(CZ) POZORNOST TÝKAJÍCÍ SE PRINCIPJ BESPECNOSTÍ PRÁCE

PRED MONTAZI SVÍTLIDLE JE NUTNÉ DUKLADNĚ PRECTENÍ NÁVODU

Nevhodný postup při montáži svítidla může způsobit poranění a také úraz obsluhující osoby. Je nutno aby všechny instalační práce a obsluhu prováděly osoby, které jsou příslušně proškolené. Svítidlo je nutno uzemnit.

(IT) MISURE DI SICUREZZE-

LEGGETE L'ISTRUZIONE ATTENTAMENTE PRIMA DI MONTARE L'APPARECCHIATURA-

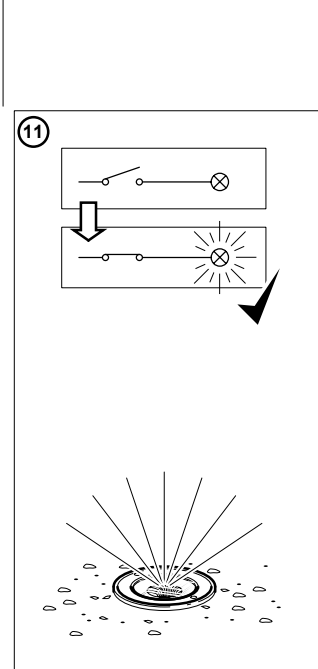
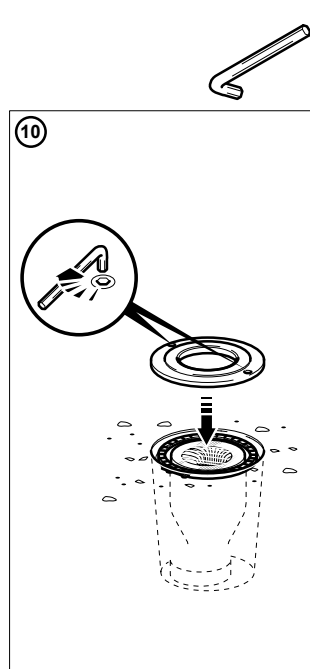
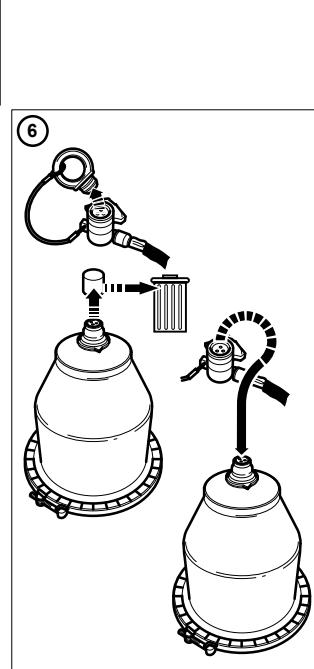
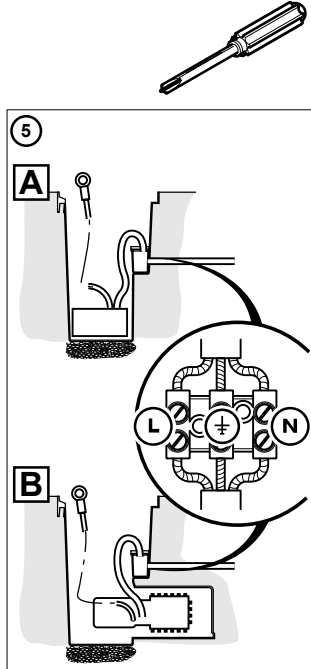
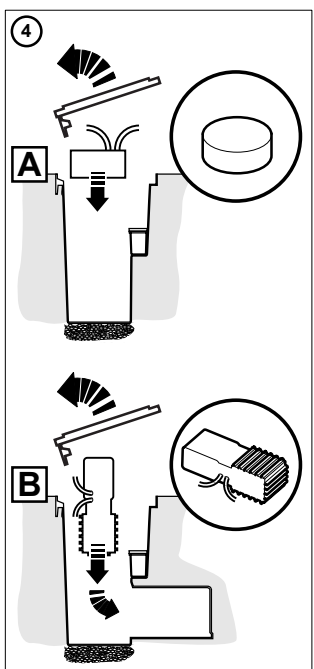
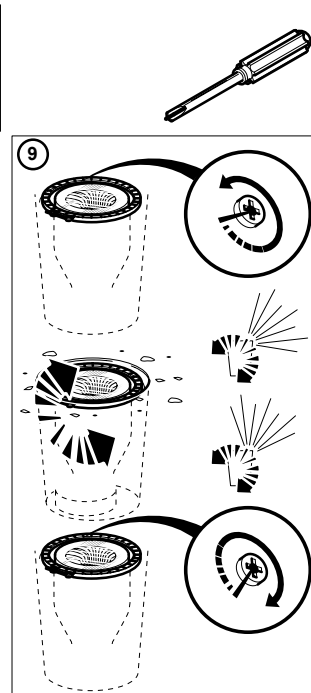
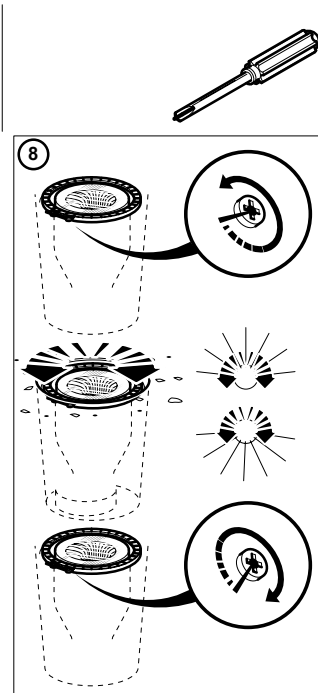
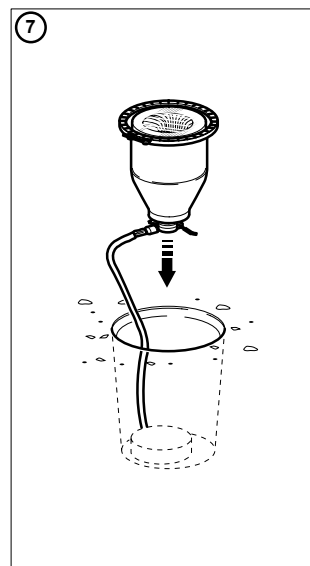
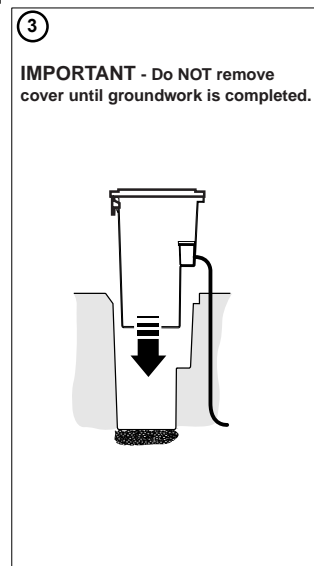
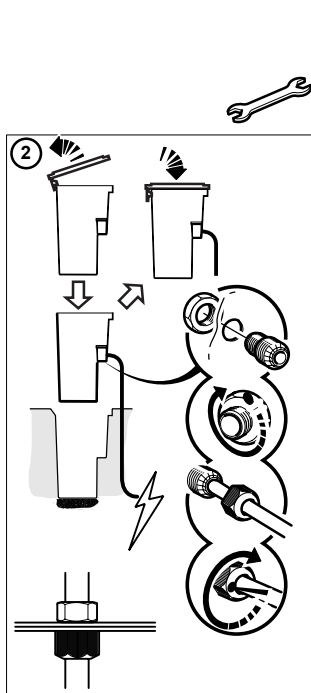
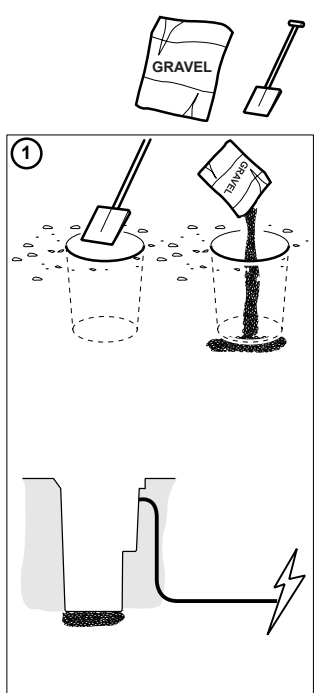
Non possiamo assumere nessuna responsabilità per danni causati a persone o cose se i lavori non sono eseguite alla perfezione. Tutti i lavori devono essere eseguite da persone adatto. L'apparecchiatura deve avere la messa a terra.

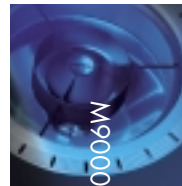


Holophane Europe Limited
Bond Avenue, Bletchley,
Milton Keynes, MK1 1JG, England.

Tel: +44 (0) 1908 649292
Fax: +44 (0) 1908 367618
E-mail: info@holophane.co.uk
www.holophane.eu.com

Holophane is a registered trade mark of Holophane Europe Limited.
The Company reserves the right to change specifications without prior notification or public announcement.





M9000 SERIES



The M9000 Series can facilitate installation by pre-installing the rough in section prior to the inclusion of any electrical components.

The rough in section can be pre-ordered and installed in advance of the project completion, allowing the critical components to be installed in a much cleaner environment, eliminating damage.

Simple Installation

The M9000 Series has been specifically designed to reduce maintenance times. A common problem with in-ground recessed luminaires is the penetration of foreign matter during maintenance.

Conventional in-ground luminaires consist of a gasket seal and a number of fixing screws. Misalignment in the tightening of these screws will jeopardise the IP rating of the luminaire leading to condensation build up.

With the M9000 Series all maintenance can be conducted away from site in a clean environment.

A pre-installed rough in section (above picture) awaits concrete pour. A protective door is supplied to prevent any ingress of dirt or concrete.

Conventional Maintenance

Typical re-lamp conditions for conventional in-grounds - Dirt, stones and moisture (above picture). After years of installation, and maintenance corrosion of the screws is common, making access difficult.

Installation Process

The M9000 Series installation is complete in just six easy steps.



1. Dig hole to appropriate depth allowing for 150mm minimum of pea gravel at bottom of rough-in-section for drainage.



2. Place the rough-in section into recess and secure level with surface plane. Note: For pre-installation leave protective cover in place.



3. Terminate incoming mains supply and Hydresal™ gear within junction box.



4. Remove protective plug and connect lamp module.



5. Lower Acralume™ into the rough in section ensuring it is aligned and securely positioned



6. Fit door and lock into position.

Note: For full specification details on the installation of the rough-in section please refer to Holophane.

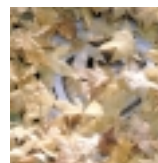
Condensation

A singular grain of stone to the slightest unevenness in gasket compression is all that it takes to cause condensation. M9000 Series Acralume™ prevents this when maintained correctly.



Thermal Protection

A build up of leaves, mulch or other such debris can cause heat damage to the electrical components. To prevent this, the M9000 Series incorporates a thermal cut out switch that senses excessive heat automatically switching the lamp off.



Aesthetics

The M9000 Series offers a range architectural door finishes:

- Aluminium
- Stainless Steel
- Bronze

