

# CSVT



**HOLOPHANE®**

# LED BATTEN CSV



# LED BATTEN CSV T

CSV T is a latest generation LED linear batten designed to directly replace existing T5 and T8 fluorescent luminaires.

CSV T is suitable for a wide range of applications, even in the most demanding of environment. The CSV T design allows for fast installation, long system life and easy maintenance.

For added lighting control and increased energy savings, CSV T is available with a tiered range of integrated controls solutions. From simple on/off PIR control through to Cloud-based control and reporting systems.

Overall CSV T offers a comprehensive solution to suit different commercial needs.

For over 125 years Holophane has enjoyed an enviable reputation throughout the world for expertise, quality and innovation in Lighting. From the earliest days, when the company pioneered its famous glass refractor, the Holophane name has been ever present as a leader in the field of luminaire and lighting design. **CSV T** is a continuation of this proud tradition and builds on our heritage of designing luminaires with exceptional optical performance and thermal management which fused together deliver a solution that is future-proof and fully serviceable.

#### Applications

- Factories
- Production Areas
- Manufacturing
- Warehouses
- Assembly Areas
- Logistics Centres
- Mezzanines

#### Overview

- Available with lumen ranges from 2,000 to 7,000 (delivered lumens).
- Frosted diffuser offering a symmetric distribution.
- 4000K
- CRI > 80.
- Efficacies of up to 155 l/w.
- Available with integrated control and emergency options (c.650 lm in emergency mode).
- System Life – 50,000 Hrs at 25°C

#### Approvals



Complies with EN60598

IP65

-25°C to +50°C

Preliminary CIBSE TM66 (CEAM) Rating: 2.2 - Definite/substantial progress to circularity.



For further information please visit the Holophane website [www.holophane.co.uk](http://www.holophane.co.uk)

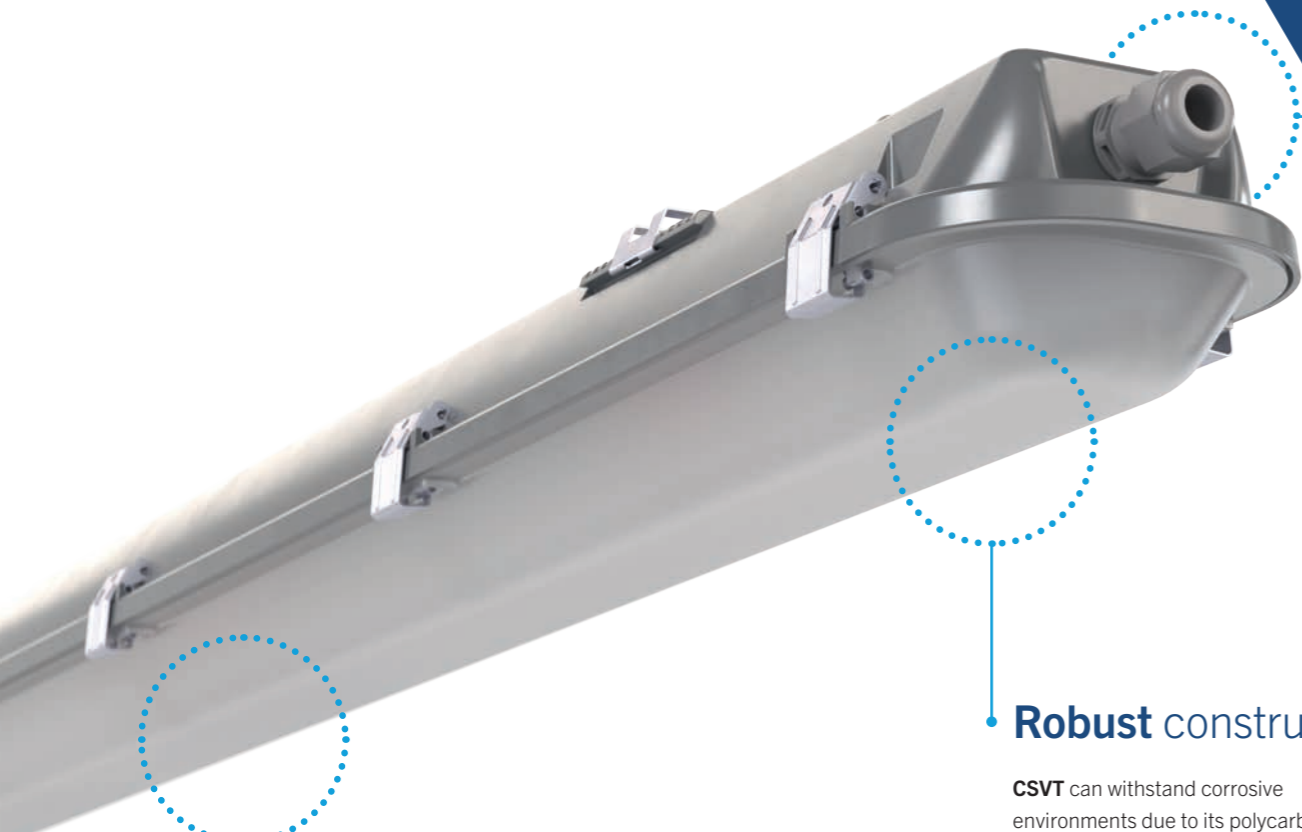
# CSV T OVERVIEW

IP65

# LED BATTEN CSV T

IK09

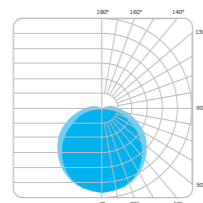
155  
lm/W



## Robust construction

CSV T can withstand corrosive environments due to its polycarbonate body and diffuser construction.

The Stainless steel latches and brackets also are suitable for these environments. For enhanced protection plastic latches are also available as an option.



Symmetric (.SY)

## Frosted diffuser

CSV T comes standard with a frosted polycarbonate diffuser producing a symmetric distribution.

1200mm (c.4ft) length



## Multiple entry points

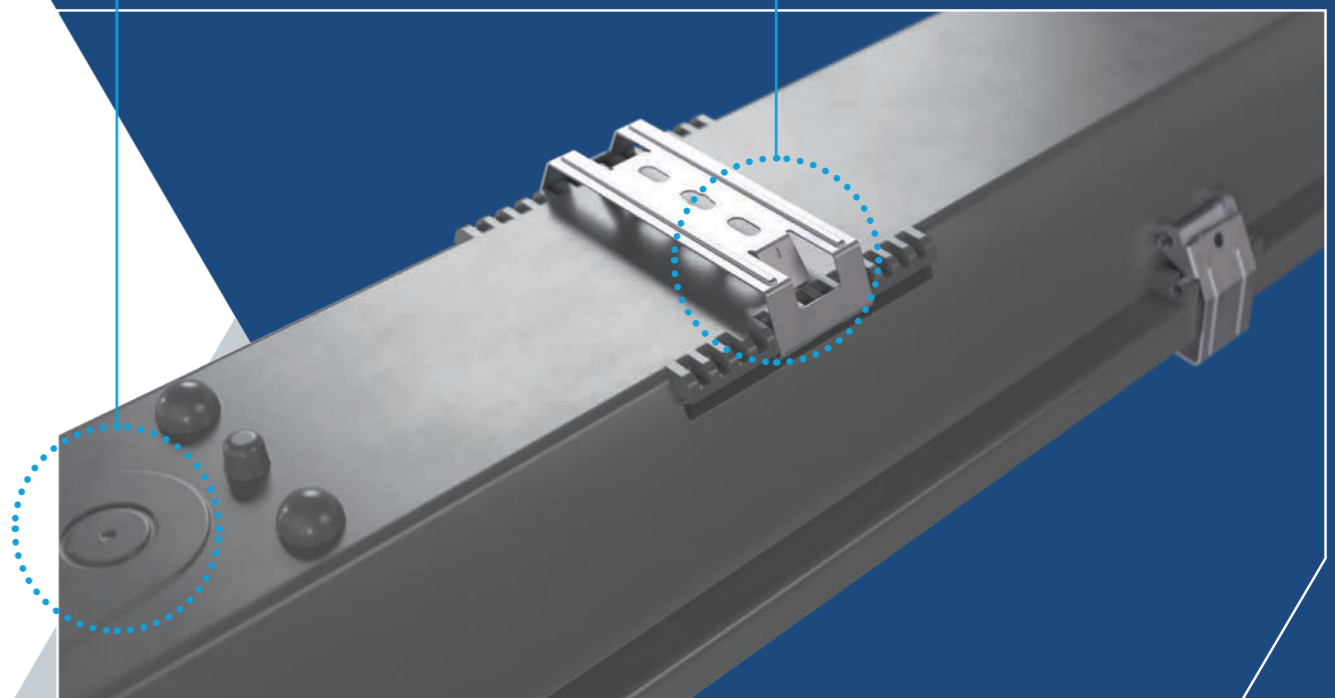
CSV T has multiple entry points to allow for flexible power termination. As standard CSV T comes with a M20 cable gland.

CSV T can be easily drilled at marked areas on the body to allow through cable entry through the top or sides.

## Easy mounting

CSV T features two stainless steel mounting brackets that allow for surface or suspension mounting (suspension kit sold separately).

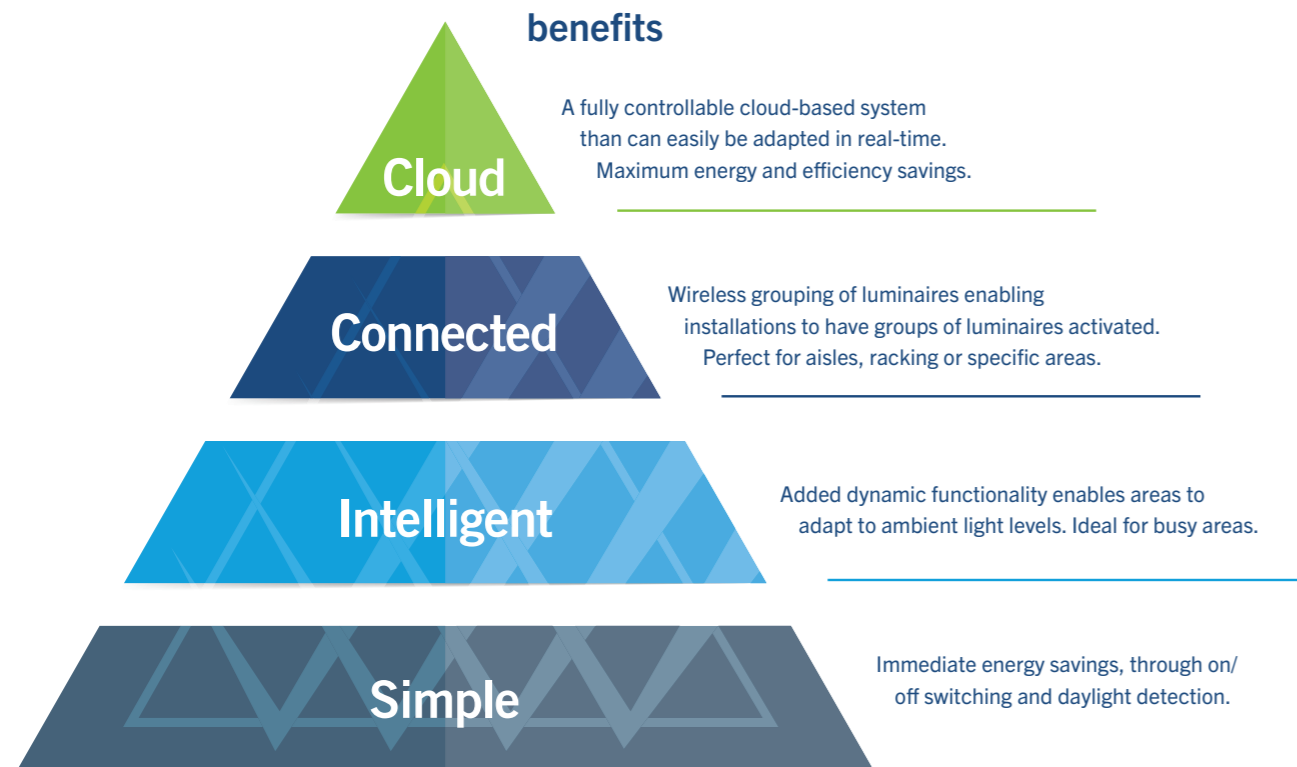
For surface mounting simply secure the brackets to a surface and clip the batten into the brackets.



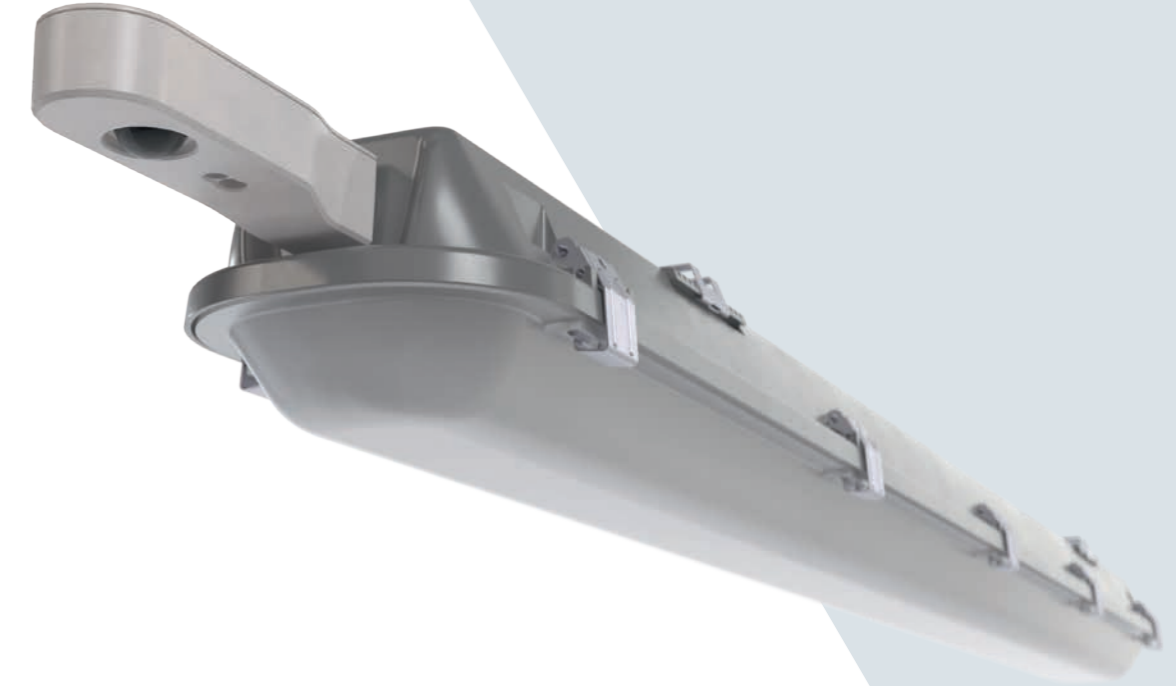
# CONTROLS AND CONNECTED SOLUTIONS

From simple to cloud based. A solution that works for you.

The Holophane controls solution is tiered to offer you a solution to cater for every type of project. Ranging from basic on/off PIRs through to cloud-based controls, Holophane can offer a competitive controls solution to work around your needs.



# CONTROLS



CSVT shown with .WIL option

	What is the functionality?	Mounting Height	Can it be programmed?	Can it be upgraded?
<b>Cloud HOLOSAir</b>	<p>We call this control solution HOLOSAir. Holophane's cloud-based system with added digital functionality and enhanced control of luminaires</p> <ul style="list-style-type: none"> <li>On/off &amp; dynamic dimming</li> <li>Wireless grouping of multiple luminaires</li> <li>Daylight sensing</li> <li>Web based cloud control and analytics</li> <li>Emergency reporting</li> <li>Failure reporting</li> </ul>	Up to 6m*	Yes, via the Holophane Commissioning service only <small>Note: Requires a HOLOSAir gateway for full functionality</small>	Yes – scalable, upgradeable
<b>Connected</b>	<p>All the same features as the intelligent PIR but with added luminaire grouping functionality</p> <ul style="list-style-type: none"> <li>On/off &amp; dynamic dimming</li> <li>Wireless grouping of multiple luminaires</li> <li>Daylight sensing</li> </ul>	Up to 6m*	Yes, via the Holophane Commissioning service only.	Yes – only the connected sensor can be upgraded to the cloud tier
<b>Intelligent</b>	<p>An intelligent PIR with added dynamic dimming</p> <ul style="list-style-type: none"> <li>On/off &amp; dynamic dimming</li> <li>Daylight sensing</li> </ul>	Up to 6m*	Yes, via remote IR programmer or via the Holophane Commissioning service	No
<b>Simple</b>	<p>A simple on/off PIR with daylight sensing</p> <ul style="list-style-type: none"> <li>On/off control</li> <li>Daylight sensing</li> </ul>	Up to 6m*	Yes, via remote IR programmer or via the Holophane Commissioning service	No

\*Dependant on solution specified

# SPECIFICATION & PERFORMANCE

## Specification

**Holophane CSVT LED linear batten** shall consist of a 1200mm polycarbonate housing which features a 'poured in place' polyurethane gasket and a frosted polycarbonate lens. The luminaire shall be sealed to IP65 and rated to IK09. CSVT can be either ceiling or surface mounted. Cable termination is via a factory fitted side-entry M20 cable gland with cut-out areas for top entry termination (suitable sealing provided by others). The design allows for fast installation via the stainless steel brackets and stainless steel latches that allow quick access for easy maintenance. Preliminary CIBSE TM66 (CEAM) Rating: 2.2 - Definite/substantial progress to circularity.

## Detailed specification

Mechanical			
<b>Materials</b>	<b>Paint colour</b>	<b>IP Rating</b>	<b>IK Rating</b>
Polycarbonate body and diffuser Stainless-steel latches and brackets	Smooth grey (RAL7035)	IP65	IK09
<b>Mounting Type</b>	<b>Mounting height</b>	<b>Ambient operating temperature</b>	<b>Weight</b>
Surface/Suspension	3m - 6m	0°C - +50°C	2.5-3.0 kg
<b>Cable Entry</b>	<b>Through-wiring</b>		
1x Side-entry M20 cable gland fitted at factory. 2 x top-entry and 1 x additional side-entry (drilled and sealed by installer)	Yes (consult installation instructions)		
Light Output			
<b>Lumens</b>	<b>Power</b>	<b>Driver current</b>	<b>Efficacy</b>
2,000 – 7,000lm	13W-53W	280mA-1115mA	up to 155lm/W
<b>Colour Temperature</b>	<b>CRI</b>	<b>Distributions</b>	<b>Lifetime Hours L70B50 @ 25°C</b>
4000 K	80 CRI	.SY (Symmetric)	50,000hrs
MacAdam Ellipses			
5-steps			
Electrical			
<b>Electrical Class</b>	<b>Surge protection</b>	<b>Power Cable Termination</b>	
Class I	8Kv/10kA (standard)	ENEC approved Push-in terminal block (suitable for 1.5mm <sup>2</sup> -2.0mm <sup>2</sup> stranded or solid core)	
<b>Power Cable Entry</b>	<b>Factory Fitted Flying Lead</b>	<b>Integrated Emergency</b>	
M20 Cable gland (suitable for 6mm-13mm diameter)	1m (available as option) - number of cores dependant on luminaire configuration	1hr or 3hr self-test and DALI addressable	
Controls			
<b>Control Protocol</b>	<b>Integrated PIRs</b>	<b>Dimming</b>	
DALI (option)	Available as option	on/off on/dim/off (available as option)	

## Typical luminaire performance

Configuration	Delivered Lumens	Circuit Power (W)	Driver Output Current (mA)	Luminaire Efficacy (lm/W)
CSV.T.1.LM0248.M1.SY	c.2,000	13	280	155
CSV.T.1.LM0348.M1.SY	c.3,000	21	455	143
CSV.T.1.LM0448.M1.SY	c.4,000	28	625	143
CSV.T.1.LM0548.M1.SY	c.5,000	36	790	139
CSV.T.1.LM0648.M1.SY	c.6,000	45	950	133
CSV.T.1.LM0748.M1.SY	c.7,000	53	1115	132

## Weight kg

CSV.T 2.5-3.0  
Dependant on configuration

## Maximum ambient operating temperature

EM1/EM3 Versions  
LM0248 - 35°C Ta  
LM0348 - 35°C Ta  
LM0448 - 35°C Ta  
LM0548 - 30°C Ta  
LM0648 - 25°C Ta  
LM0748 - 25°C Ta

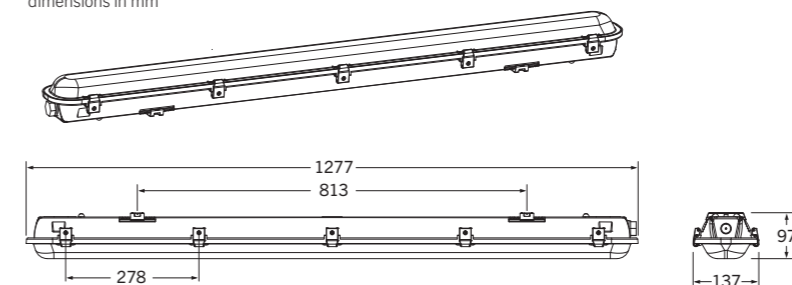
# ORDERING DETAILS & DIMENSIONS

Code	<b>Luminaire (required)</b>						
CSV.T	CSV.T						
Code	<b>Series (required)</b>						
.1	Series 1						
Code	<b>Lamp Type (required)</b>						
.LM0248	LED light engine producing c.2,000 lm with a nominal 4000K colour temperature						
.LM0348	LED light engine producing c.3,000 lm with a nominal 4000K colour temperature						
.LM0448	LED light engine producing c.4,000 lm with a nominal 4000K colour temperature						
.LM0548	LED light engine producing c.5,000 lm with a nominal 4000K colour temperature						
.LM0648	LED light engine producing c.6,000 lm with a nominal 4000K colour temperature						
.LM0748	LED light engine producing c.7,000 lm with a nominal 4000K colour temperature						
Code	<b>Operating Package (required)</b>						
.M1	c.1200mm length						
Code	<b>Optical Distribution (required)</b>						
.SY	Symmetric						
Code	<b>Fixing Method (required)</b>						
.SM	Universal mounting bracket (suitable for surface and suspension mounting)						
Code	<b>Colour (required)</b>						
.C6	Smooth Grey (RAL7035)						
Code	<b>Dimming Outputs (option)</b>						
.LRD	DALI enabled driver						
Code	<b>Controls (option)</b>						
.PL0	Integrated PIR, suitable up to 6m, with switching-only functionality. Switches off after 10 minutes of inactivity. Remotely re-programmable with accessory HEL.PR.G (purchased separately)						
.PL1	Integrated PIR, suitable up to 6m. Dims to 30% after 10 minutes of inactivity - switches off after further 10 minutes. Remotely re-programmable with accessory HEL.PR.G (purchased separately)						
.WIL	Integrated HOLOSAir wireless node, supports grouping, suitable up to 6m - includes PIR & photocell (Requires SER.COM.DAY or SER.COM.NIGHT commissioning)						
Code	<b>Emergency (option)</b>						
.EM1	1-Hr integral self-test DALI maintained emergency						
.EM3	3-Hr integral self-test DALI maintained emergency						
Code	<b>Cable Entry (option)</b>						
.FL1	1m flying lead (number of cores dependant on luminaire configuration)						
Code	<b>Canopy (option)</b>						
.PCL	Polycarbonate Latches						
CSV.T	.LM0248	.M1	.SY	.SM	.C6	.LRD	.PL0

Example



dimensions in mm



**Note:** The specifications of the Holophane luminaire, all descriptions, illustrations, drawings and specifications in the Holophane catalogue and website represent only general particulars of the goods to which they apply and shall not form part of any contract. The company reserves the right to change specifications at its discretion without prior notification or public announcement.

# LED BATTEN CSVT



## **HOLOPHANE®**

Holophane Europe Limited  
Bond Avenue, Bletchley, Milton Keynes MK1 1JG United Kingdom  
Telephone: +44 (0)1908 649292 UK Fax: +44 (0)1908 367618  
International Fax: +44 (0)1908 363789  
E-mail: [info@holophane.co.uk](mailto:info@holophane.co.uk)

[www.holophane.co.uk](http://www.holophane.co.uk)

**AcuityBrands**

