



HOLOPHANE®

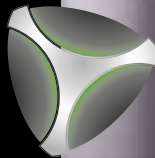
An **Acuity**Brands Company



THE QUEEN'S AWARDS
FOR ENTERPRISE:
INNOVATION
2017



DENVER™
elite system



bollard



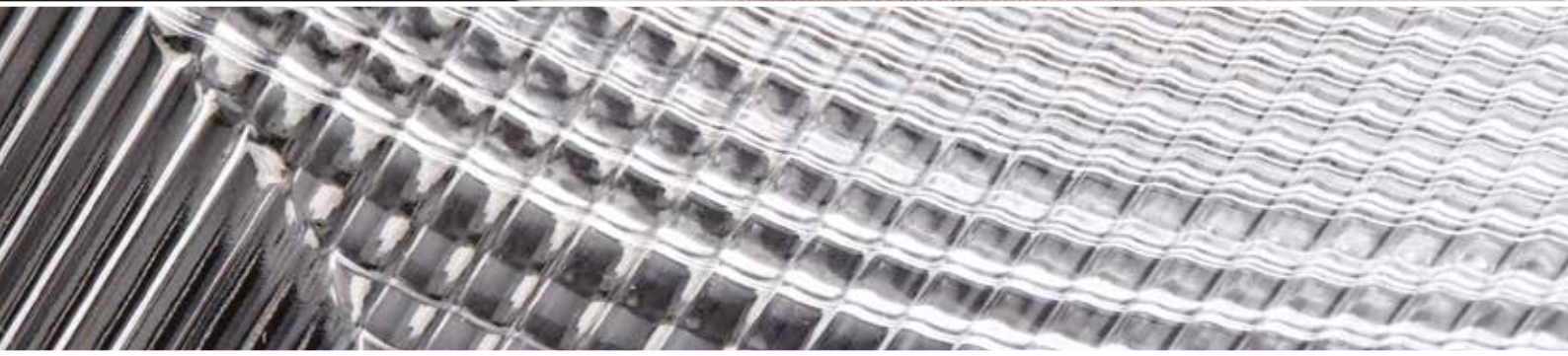
denver™ elite bollard

Patent Pending
REGISTERED EUROPEAN DESIGN

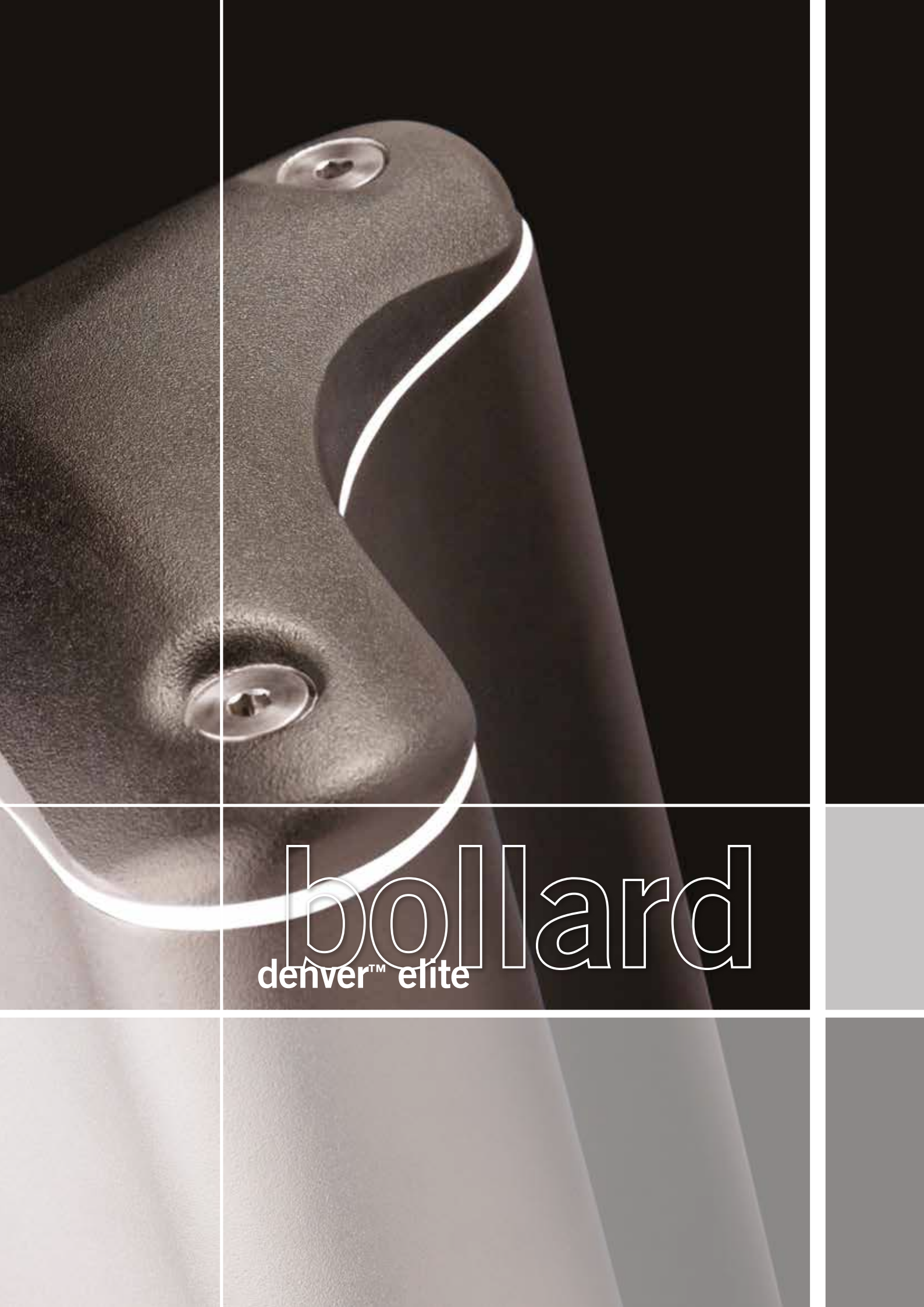


DENVER™
elite system

bollard



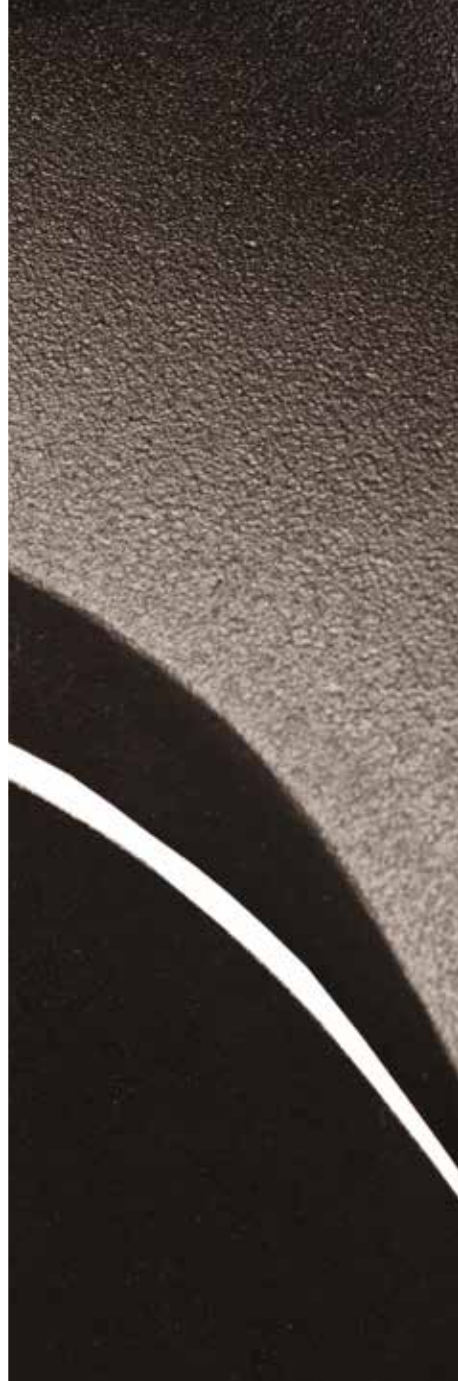
 *prismaled*™



bollard
denver™ elite

DENVER™
elite system

bollard



REGISTERED EUROPEAN DESIGN





Patent Pending

The **Denver™ Elite bollard** combines a palette of design variables, which include aesthetic appeal, quality, durability and performance.

The Denver™ Elite bollard is a modern aesthetic design that incorporate LED technology. Despite its stylised design the prismatic optical performance of the bollard is still industry leading offering a choice of distributions. The trilobe design profile with patent pending decorative light line membrane is a progression of everything we've learnt from our existing bollard whilst taking new technologies and environmental issues into consideration.



The product has been designed to incorporate a heat barrier that enables a 'cool to touch' feature and ensures that the product adheres to BS EN ISO 13732-1. The membrane is mounted within the cap itself ensuring that it meets the 'cool to touch' standard at all times. In addition the barrier allows us to create a unique 'light line'. Giving you a safe and stylised product in one.



specification

The luminaire shall consist of an extruded aluminium body, housing integral control gear for LED technology. The optical arrangement shall consist of a prismatic lens or prismatic lens with louvre. The top tri-lobe gasket enabling the bollard to achieve EN60598-1 (patent pending) is secured between the top cap and body via three stainless steel nuts. Root mounted option available. The luminaire complies to EN60598 with a range of options and accessories.

lamp types

1,000 or 2,000 lumen package LED

TM66 CEAM-Make rating

Preliminary Rating: 2.2 (Definite/substantial progress to circularity)

approvals

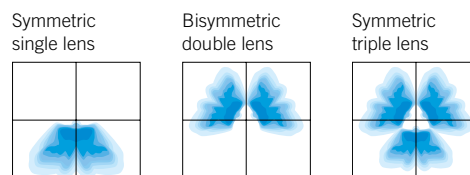
- > BS EN60598-1
- > BS EN55015
- > BS EN61000-3-2
- > BS EN61000-3-3
- > BS ENISO13732
- > BS EN62031
- > BS EN62384
- > BS EN62560

ip rating

IP659



light distribution



features and benefits

Contemporary styling

- > Unique 'registered' tri-lobe design giving an aesthetic appeal that complements today's modern architecture

High Quality Construction

- > Durable and robust design via three securing rods and nuts
- > Fully weather sealed

Single, Double or Triple lens

- > Unique lens layout that is suitable for a wide range of applications

Louvre with Prismatic Lens

- > Gives the bollard additional upright cut-off. A first in any bollard

Decorative 'Patent Pending' Light Line

- > Gives the product a unique style
- > Cool to touch. Product complies to BS ENISO 13732-1

Available in 2 heights

- > Flexibility
- > Different visual effects

Vandal resistant

- > Robust styling and build process.
- > Patented tri-lobe design enables stability

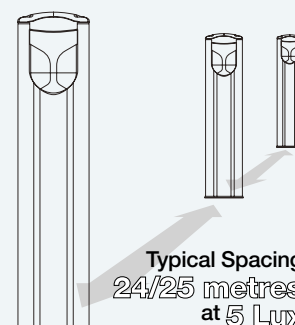
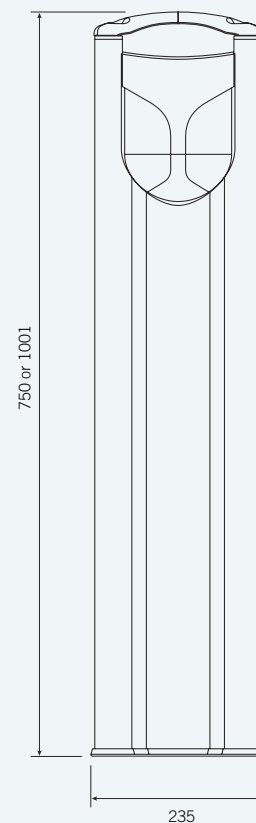
weight & thermal data (1m / 0.75m version)

Lamp Type	Weight (kg)	Min. Operating Temperature (°C)	Max. Ambient Temperature (°C)	Temp of Top(°C)
.L014	10.5 / 9	TBC	TBC / TBC	TBC / TBC
.L024	10.5 / 9	TBC	TBC / TBC	TBC / TBC

*allow 0.5kg for .EM = emergency version on compact fluorescent lamp types



dimensions in mm



ordering details

To find out more
please visit
www.holophane.co.uk

Code

DEB Denver™ Elite Bollard

Code Lamp Type (required)

.L014 LED light engine producing c.1,000 lm with a nominal 4000K

.L024 LED light engine producing c.2,000 lm with a nominal 4000K

Code Distribution

.PAY Asymmetrical Distribution

Code Optical Enclosure

.SU Single Sided Asymmetric Distribution

.DO Double Sided Bisymmetric Distribution

.TR Triple Sided Symmetric Distribution

Code Head / Height

.H75 750mm High

.H100 1000mm High

Code Colour (required)

.C1 Smooth White (RAL 9016)

.C4 Smooth Graphite (RAL 7011)

.C6 Smooth Grey (RAL 7035)

.C7 Textured Black (RAL 9005)

.C9 Metallic Silver (RAL 9006)

.RAL**** RAL Colour (customer choice)

Code Paint Finish

.C Enhanced Paint Finish

Code Cut Outs

.MCB Mini circuit breaker

Code Auxiliary Circuits

.TW Through Wiring option

Code Emergency

.ME1 3hr maintained emergency IP65

Code Screws

.V1 Vandal-resistant screws



Example	DEB	.26PL4	.LYA	.DO	.H75	.C9	.C	.MCB	.TW	.ME1	.V1
---------	-----	--------	------	-----	------	-----	----	------	-----	------	-----

Lumen data is considered to be representative of the configuration shown, and may vary, with a tolerance on flux of +/- 7% (typical of LED manufacturers data) and luminaire power of +/- 5%.

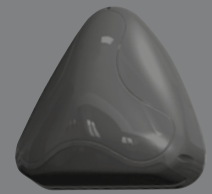
luminaire accessories

Code

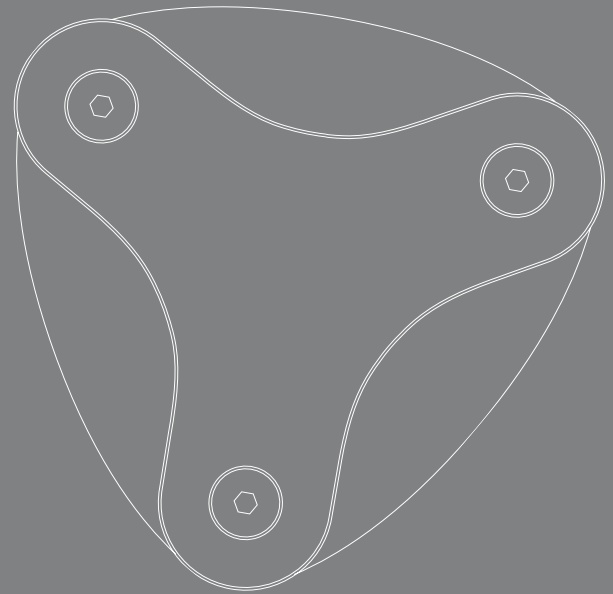
DBL.FT Set of 3 Bolts M10 x 100mm for Flange Base Fixing

DEB.ROOT Root Mounting Spike to fit Flange Base Denver™ Elite Bollard

DBL.VK Vandal key for Denver™ Elite Bollard



denver™ elite range



DENVER™
elite system



bollard

Holophane Europe Limited
Bond Avenue, Bletchley, Milton Keynes MK1 1JG United Kingdom
Telephone: +44 (0) 1908 649292 UK Fax: +44 (0) 1908 367618
International Fax: +44 (0) 1908 363789
E-mail: info@holophane.co.uk

www.holophane.co.uk



THE QUEEN'S AWARDS
FOR ENTERPRISE:
INNOVATION
2017

