

PRISMASHIELD™

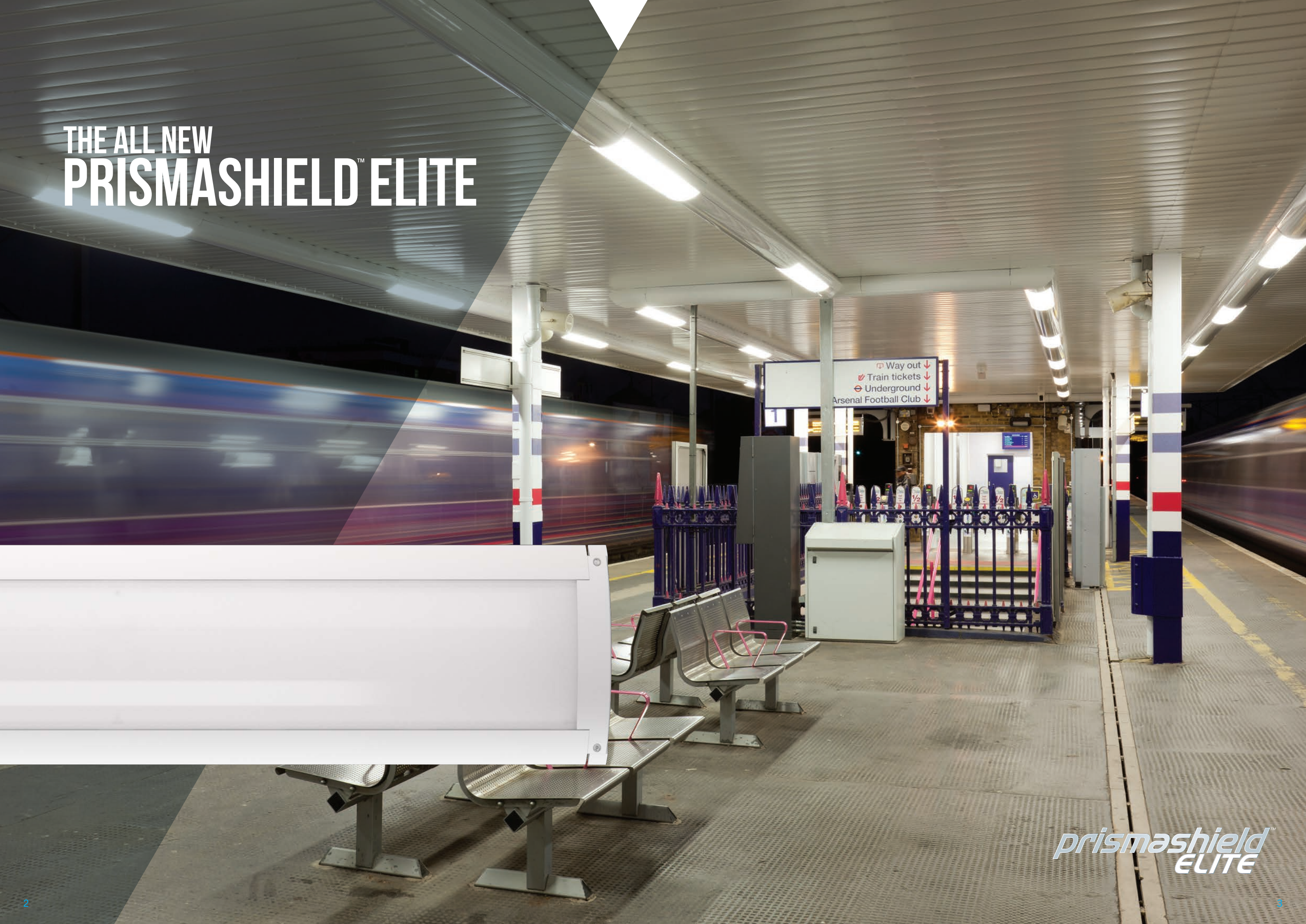
ELITE



prismashield™
ELITE



THE ALL NEW PRISMASHIELD™ ELITE



prismashield
ELITE

BULKHEAD PRISMASHIELD™ ELITE

Designed to meet the demanding environments of a metro or rail infrastructure application, Prismashield™ Elite is a robust, stylish and multi functional luminaire. Prismashield™ Elite can withstand severe physical attack, exposure to weather and vibration.

The luminaire is available with a frosted glass lens for underground tunnels or a polycarbonate lens with internal prisms. Both optics produce a precise symmetric light distribution for even, glare-free illumination helping people feel safe and secure in arduous environments.

Prismashield™ Elite is a versatile lighting solution that can be surface or cornice mounted individually or in continuous runs utilising the infill panels system. An optional integrated surface cable management system can be attached to conceal power, emergency and communications in a complete solution.

For over 125 years Holophane has enjoyed an enviable reputation throughout the world for expertise, quality and innovation in Lighting. From the earliest days, when the company pioneered its famous glass refractor, the Holophane name has been ever present as a leader in the field of luminaire and lighting design. Prismashield Elite is a continuation of this proud tradition and builds on our heritage of designing luminaires with exceptional optical performance and thermal management which fused together deliver a solution that is future-proof and fully serviceable.

Applications

- Train Stations
- Rail Yards and Pits
- Underpasses
- Pedestrian Walkways

Overview

- Available with lumen ranges from 2,000 to 14,000 (delivered lumens).
- Robust construction for demanding environments.
- 4000K (3000K available on request).
- CRI > 80.
- Available with integrated PIRs or compatible with cloud-based HOLOS Air system.

TM66 CEAM-Make Rating

Preliminary Rating: 2.4
(Definite/substantial progress to circularity).

Approvals



Complies with EN60598

IP65

IK10

Designed to meet: BS EN 55015

Designed to meet: London Underground
Section 12 compliance



For further information please visit
the Holophane website www.holophane.co.uk

NEW PRISMASHIELD OVERVIEW AND FEATURES

IP65

up to
135
lm/W

Constant Pressure Door

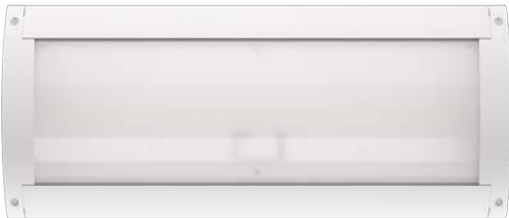
Prismashield Elite utilises a dual contact door retention design . Through combining a clip-in interface and bolt system, this ensure a constant and reliable IP seal. This is advantages in environments where cleaning or wash-down activities take place. Additionally, the door can be easily replaced if damaged.

Multiple entry points

Prismashield Elite features multiple knockout entry-points enabling flexibly installation options and cable routing.

2 Lengths for flexible output

Prismashield Elite is available in 2 sizes depending on the lumen output required. This ensures maximum material utilisation relative to the lumen output.



600mm
2,000 - 8,000
lms



1200mm
10,000 - 14,000
lms

Vandal resistant screws

Prismashield Elite comes equipped with vandal resistant screws as standard, providing a layer of enhanced protection against external tampering.

Pressure Equalisation Valve

The Prismashield Elite has a pressure equalisation valve that balances the internal / external pressure while preventing the penetration of solid and liquid contaminants, thus extending the life of the joints and the internal electronic elements. Essential in demanding environments.

Lens options

Choose from either a Prismatic polycarbonate (IK10) or a Frosted glass lens (IK07) depending on the desired application.



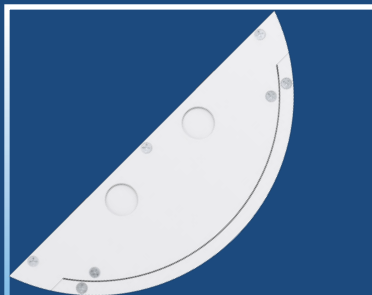
INSTALLATION OPTIONS

Prismashield Elite can be mounted in a myriad of options depending on your project requires. A cable management system (CMS) is also available to create seamless constant runs.

Ceiling mounted



Wall mounted

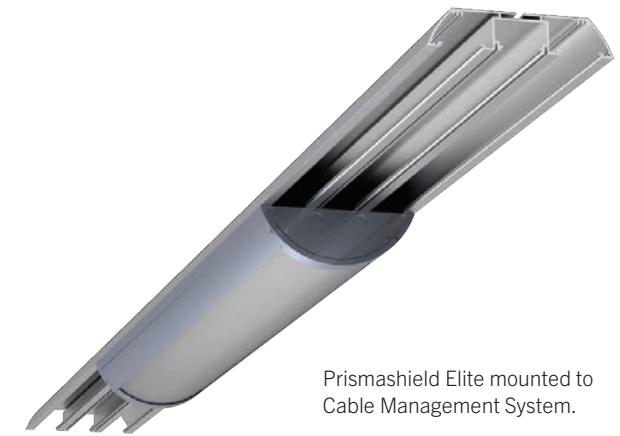


Cornice mounted

end plate covers available as accessories

The Cable Management System and Infill panels

can be cut to length on site to aid ease of installation and ensure full on-site flexibility



Prismashield Elite mounted to Cable Management System.

Cable management system



Cable Management System with three channels for cables



End plate for Cable Management System when used with Prismashield Elite
PSE.CMS.SM.EP



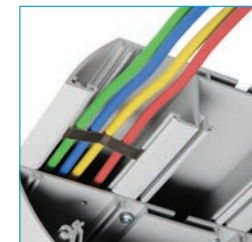
Mitre joint aid mounted to Cable Management System



Mitre joint aid for variable angle mounting (0-90°)
PSE.JMA



Movable cable retention clip
PSE.CRC



Cable Management System - cable retention clip **PSE.CRC**

Luminaire features



Prismashield Elite infill panel mounted to Cable Management System

Infill panels



Clip-in infill panel
PSE.1000/2000/3000INFILL



Retaining strap on infill panels ensure safety in the event of an emergency or failure mode **PSE.1000/2000/3000.INFILL**

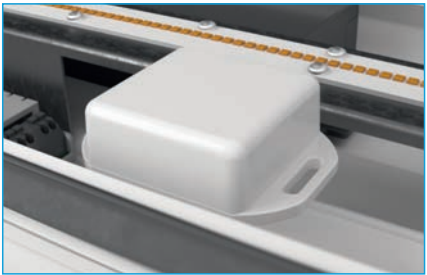
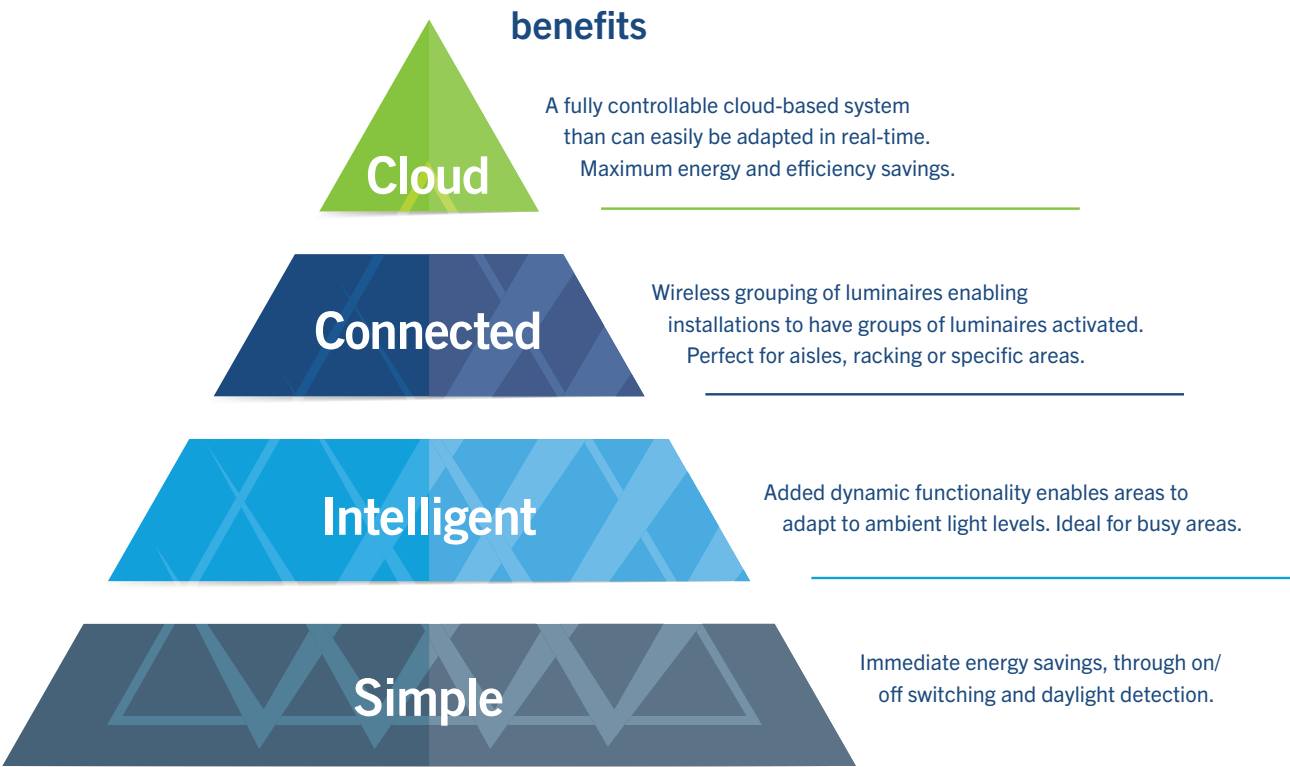


Cornice version end plate
PSE.CM.EP.C9

CONTROLS AND CONNECTED SOLUTIONS

From simple to cloud based. A solution that works for you.

The Holophane controls solution is tiered to offer you a solution to cater for every type of project. Ranging from basic on/off PIRs through to cloud-based controls, Holophane can offer a competitive controls solution to work around your needs.



All sensors and devices are placed internally and behind the Prismashield Elite lens.

CONTROLS



		What is the functionality?	Mounting Height	Can it be programmed?	Can it be upgraded?
Cloud HOLOSAir	We call this control solution HOLOSAir. Holophane's cloud-based system with added digital functionality and enhanced control of luminaires	<ul style="list-style-type: none">On/off & dynamic dimmingWireless grouping of multiple luminairesDaylight sensingWeb based cloud control and analyticsEmergency reportingFailure reporting	Up to 6m*	Yes, via the Holophane Commissioning service only <small>Note: Requires a HOLOSAir gateway for full functionality</small>	Yes – scalable, upgradeable
Connected	All the same features as the intelligent PIR but with added luminaire grouping functionality	<ul style="list-style-type: none">On/off & dynamic dimmingWireless grouping of multiple luminairesDaylight sensing	Up to 6m*	Yes, via the Holophane Commissioning service only.	Yes – only the connected sensor can be upgraded to the cloud tier
Intelligent	An intelligent PIR with added dynamic dimming	<ul style="list-style-type: none">On/off & dynamic dimmingDaylight sensing	Up to 6m*	Yes via the Holophane Commissioning service	No
Simple	A simple on/off PIR with daylight sensing	<ul style="list-style-type: none">On/off controlDaylight sensing	Up to 6m*	Yes via dip switches or via the Holophane Commissioning service	No

*Dependant on solution specified

ORDERING
DETAILS

Code	Luminaire (required)									
PSE	Prismashield Elite anti-vandal fluorescent luminaire									
Code	Series (required)									
.2	Series 2									
Code	Lamp Type (required)									
.LM0248	LED light engine producing c.2,000 lm with a nominal 4000K colour temperature*									
.LM0448	LED light engine producing c.4,000 lm with a nominal 4000K colour temperature*									
.LM0648	LED light engine producing c.6,000 lm with a nominal 4000K colour temperature*									
.LM0848	LED light engine producing c.8,000 lm with a nominal 4000K colour temperature*									
.LM1048	LED light engine producing c.10,000 lm with a nominal 4000K colour temperature^									
.LM1248	LED light engine producing c.12,000 lm with a nominal 4000K colour temperature^									
.LM1448	LED light engine producing c.14,000 lm with a nominal 4000K colour temperature^									
Code	Operating Package (required)									
.M1	600mm enclosure									
.M2	1200mm enclosure									
Code	Optical Distribution (required)									
.SY	Symmetric Distribution									
Code	Lens (options)									
.FGL	Frosted Glass Lens									
.PFL	Prismatic Polycarbonate Frosted Lens									
Code	Mounting (required)									
.SM	Surface mounted									
.CM	Cornice mounted									
Code	Colour (required)									
.C1	Smooth White (RAL9016)									
.C9	Metallic Silver (RAL9006)									
.RAL****	RAL Colour (Customer choice)									
Code	Paint Finish (option)									
.C	Enhanced Paint Finish									
Code	Electrical Class (option)									
.CII	Class II									
Code	Dimming Outputs (option)									
.LRD	DALI									
Code	Control Gear (option)									
.CL7	Programmed to deliver 70% of the initial lumens over the life of the luminaire									
.CL8	Programmed to deliver 80% of the initial lumens over the life of the luminaire									
.CL9	Programmed to deliver 90% of the initial lumens over the life of the luminaire									
.CL****	Customer specified programming									
Code	Controls (option)									
.PLO	Integrated microwave sensor, suitable up to 6m, with switching-only functionality. Switches off after 20 minutes of inactivity. Not programmable.									
.PL1	Integrated microwave sensor, suitable up to 6m. Dims to 30% after 10 minutes of inactivity - switches off after further 10 minutes. (Requires SER.COM.DAY or SER.COM.NIGHT commissioning).									
.WIL	Integrated microwave sensor & wireless node, supports grouping, suitable up to 6m (Requires SER.COM.DAY or SER.COM.NIGHT commissioning).									
Code	Emergency (option)									
.EM1	1hr integral maintained DALI emergency									
.EM3	3hr integral maintained DALI emergency									
PSE	.LM0248	.M1	.SY	.FGL	.SM	.C1	.C	.CII	.LRD	.CL7
Example										



Luminaire accessories

Code	
PSE.VK*	Key for vandal resistant screw suitable for Prismashield Elite (PSE) luminaire

Cable management system and accessories	
3 metre extrusion length to be cut / mitred on site by others	
PSE.CMS.SM.C1	Prismashield Elite 3000m length of surface mount cable management system. White (RAL9016)
PSE.CMS.SM.C9	Prismashield Elite 3000m length of surface mount cable management system. Silver (RAL9006)
PSE.CMS.SM.EP.C1	Prismashield Elite surface cable management end plate. White (RAL9016)
PSE.CMS.SM.EP.C9	Prismashield Elite surface cable management end plate. Silver (RAL9006)
PSE.CRC	Cable retention clips to be used in conjunction with Cable Management System (pack of 9)
PSE.JMA	Infill/Cable Management System variable 0-90° mitre joint mounting aid (1 required per joint)

Infill bodies, panels and end plates	
compatible with CMS mounting or stand alone luminaire mounting	
PSE.1000.INFILL.C1	Prismashield Elite blanking infill body (1000mm nominal length). White (RAL9016)
PSE.1000.INFILL.C9	Prismashield Elite blanking infill body (1000mm nominal length). Silver (RAL9006)
PSE.2000.INFILL.C1	Prismashield Elite blanking infill body (2000mm nominal length). White (RAL9016)
PSE.2000.INFILL.C9	Prismashield Elite blanking infill body (2000mm nominal length). Silver (RAL9006)
PSE.3000.INFILL.C1	Prismashield Elite blanking infill body (3000mm nominal length). White (RAL9016)
PSE.3000.INFILL.C9	Prismashield Elite blanking infill body (3000mm nominal length). Silver (RAL9006)
PSE.1000.INFILL.CM.C1	Prismashield Elite cornice mount blanking infill body (1000mm nominal length). White (RAL9016)
PSE.1000.INFILL.CM.C9	Prismashield Elite cornice mount blanking infill body (1000mm nominal length). Silver (RAL9006)
PSE.2000.INFILL.CM.C1	Prismashield Elite cornice mount blanking infill body (2000mm nominal length). White (RAL9016)
PSE.2000.INFILL.CM.C9	Prismashield Elite cornice mount blanking infill body (2000mm nominal length). Silver (RAL9006)
PSE.3000.INFILL.CM.C1	Prismashield Elite cornice mount blanking infill body (3000mm nominal length). White (RAL9016)
PSE.3000.INFILL.CM.C9	Prismashield Elite cornice mount blanking infill body (3000mm nominal length). Silver (RAL9006)
PSE.INFILL.EP.C1	End plate for Prismashield Elite infill. White (RAL9016) Not required for Cornice version
PSE.INFILL.EP.C9	End plate for Prismashield Elite infill. Silver (RAL9006) Not required for Cornice version
PSE.CM.EP.C1	Prismashield Elite cornice end plate. White (RAL9016)
PSE.CM.EP.C9	Prismashield Elite cornice end plate. Silver (RAL9006)
PSE.JMA	Infill/Cable Management System variable 0-90° mitre joint mounting aid (1 required per joint)



* LM2048/LM0448/LM0648/LM0848 only compatible with .M1 ^ LM1048/LM1248/LM1448/LM1648 only compatible with .M2

*Note: PSE.VK is an optional accessory for Prismashield Elite (PSE). For additional information please contact your local Holophane representative.

Note: The specifications of the Holophane luminaire, all descriptions, illustrations, drawings and specifications in the Holophane catalogue and website represent only general particulars of the goods to which they apply and shall not form part of any contract. The company reserves the right to change specifications at its discretion without prior notification or public announcement.

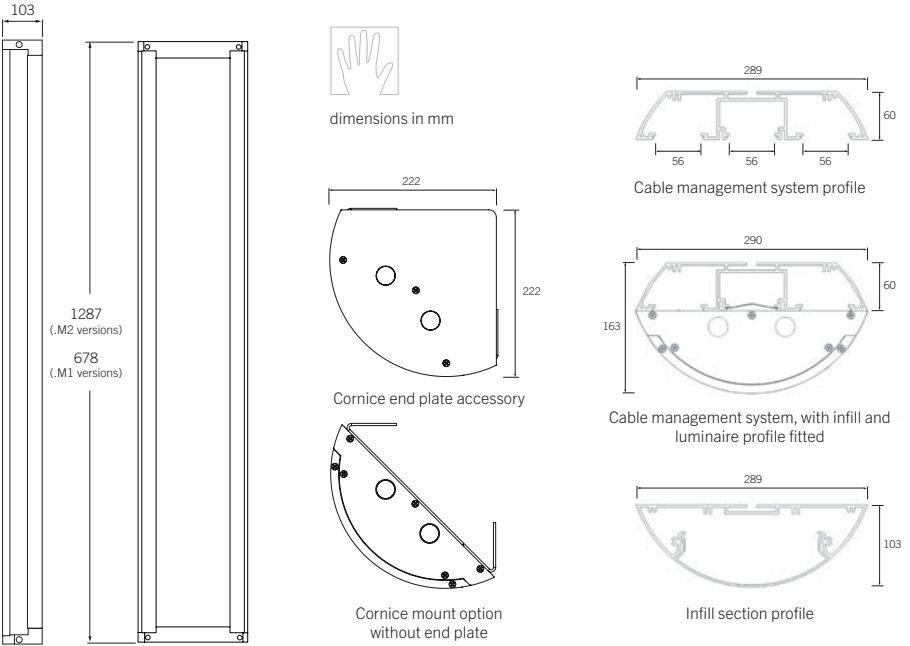
DIMENSIONS & PERFORMANCE

To specify:

The luminaire shall consist of an extruded aluminium body combined with LM6 die cast aluminium end caps. The electronic control gear is mounted directly to the luminaire body extrusion. Three 20mm o/d cable entry points to luminaire body and Two 20mm o/d entry points on each end casting to allow through wiring. The optics shall be available in either a 3mm thick polycarbonate diffuser lens with internal prisms or a 4.7mm thick frosted (laminated) glass lens that is housed in a complete aluminium framed door assembly.

Bespoke LED system developed around the existing luminaire housing providing a symmetric distribution.

An IP rating of 65 shall be achieved with one piece gasket providing a constant seal. The luminaire shall be suitable for surface or cornice mounting with the ability to through wire, for continuous run mounting, and have the ability to be used in conjunction with a bespoke Cable Management System and infill panels.



Typical luminaire performance

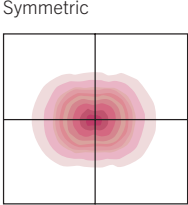
Configuration	Delivered Lumens	Circuit Power (W)	Driver Output Current (mA)	Luminaire Efficacy (lm/W)	Rated Life of LED Module (L70B50 @Ta 50°C)
PSE.2.LM0248.M1	c.2,000	18	300	117	100,000 hrs
PSE.2.LM0448.M1	c.4,000	30	340	135	100,000 hrs
PSE.2.LM0648.M1	c.6,000	47	525	129	100,000 hrs
PSE.2.LM0848.M1	c.8,000	64	710	126	100,000 hrs
PSE.2.LM1048.M2	c.10,000	77	430	130	100,000 hrs
PSE.2.LM1248.M2	c.12,000	94	525	129	100,000 hrs
PSE.2.LM1448.M2	c.14,000	110	615	128	100,000 hrs

Weight

Configuration	Length (mm)	Weight (kg)
		Glass (FGL) Poly (PFL)
M1	678	7 5
M2	1287	13 9

3 metres of CMS: 18kg

Light Distribution



THE ALL NEW PRISMASHIELD ELITE™



Note: Data is correct at time of print.
* For other life metric data in line with IEC PAS62722-2-1 and 62717 contact your Holophane Representative for details.
† Based on the average of all the optical distribution options.

BULKHEAD PRISMASHIELD™ ELITE



Holophane Europe Limited
Bond Avenue, Bletchley, Milton Keynes MK1 1JG United Kingdom
Telephone: +44 (0)1908 649292
E-mail: info@holophane.co.uk
www.holophane.co.uk

 **AcuityBrands.**

